

Signature Livings

District 2

سيجنيشر ليفينغس للعقارات

A close-up, artistic photograph of a woman's face, focusing on her eyes. She has light-colored eyes with dark, dramatic eye makeup, including thick eyeliner and shimmering eyeshadow. Her skin is smooth and has a warm, golden glow. The background is blurred, showing hints of green foliage, suggesting an outdoor setting. The lighting is soft and directional, highlighting the contours of her face.

Where Greenery Meets
Nature's Beauty Of Luxury Living



District 2

Perfectly Positioned

05 Mins

Drive to
M2 Motorway

10 Mins

Drive to
Islamabad International Airport

20 Mins

Drive to
Downtown Islamabad

30 Mins

Drive to
Centaurus Mall

35 Mins

Drive to
Margalla Hills



MARGALLA
HILLS



DOWNTOWN
ISLAMABAD



ISLAMABAD
INTERNATIONAL
AIRPORT



M-2

Signature Livings
DISTRICT 2



WELCOME TO
District 2
Signature Livings





Convenience
at your doorstep



A place to
gather & grow

A haven to
relax & explore



Heart of the
community







Refined

Active Estate Living

Positioned near Islamabad International Airport. District 2 presents the opportunity to experience an unparalleled activity-based estate lifestyle in an exclusive gated community.



Basketball Court



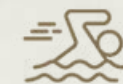
Tennis Court



Paddle Tennis Court



Kids Play Area



Swimming Pool

A Modern Haven

This is where contemporary design meets the warmth of a home. Townhouses in the community are gracefully arranged, exuding modern luxury. While the exteriors mirror the dynamic spirit of luxury living, the interiors evoke a deep sense of tranquility and connection to nature.





AMENITIES

- A Community Center
- B Kids Play Area
- C Water Boating
- D 24/7 security
- E Games Area
- F Theme Park
- G Picnic Spot
- H Hospital
- I Mosque
- J Parks

■ Utilities

TYPES

- ◆ Townhouses
(5 Marla, 10 Marla & 1 Kanal)
- ◆ Apartments (3 Bedroom)
- ◆ Commercial Spaces

District 2

Signature Livings





Elegance in Every Corner

A collection of beautifully designed townhouses which combine elegance and comfort.

The homes are masterpieces which bring together style and functionality for its residents, thus exhibiting opulence in every corner.





An Elevated Lifestyle

A community where there is
something for everyone.



Hospital



Kids
Play Area



Water
Boating



Mosque



Parks



Swimming
Pool



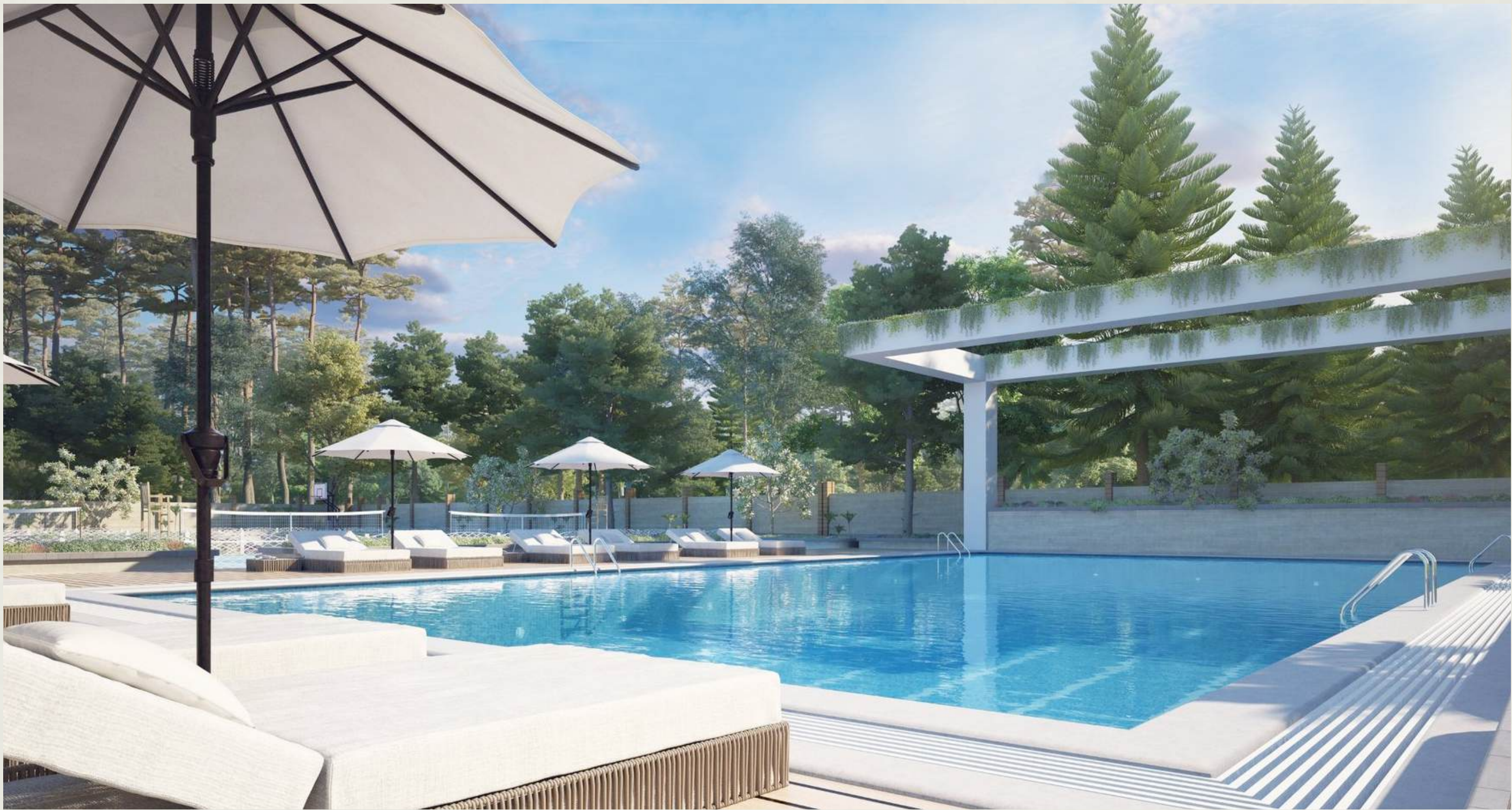










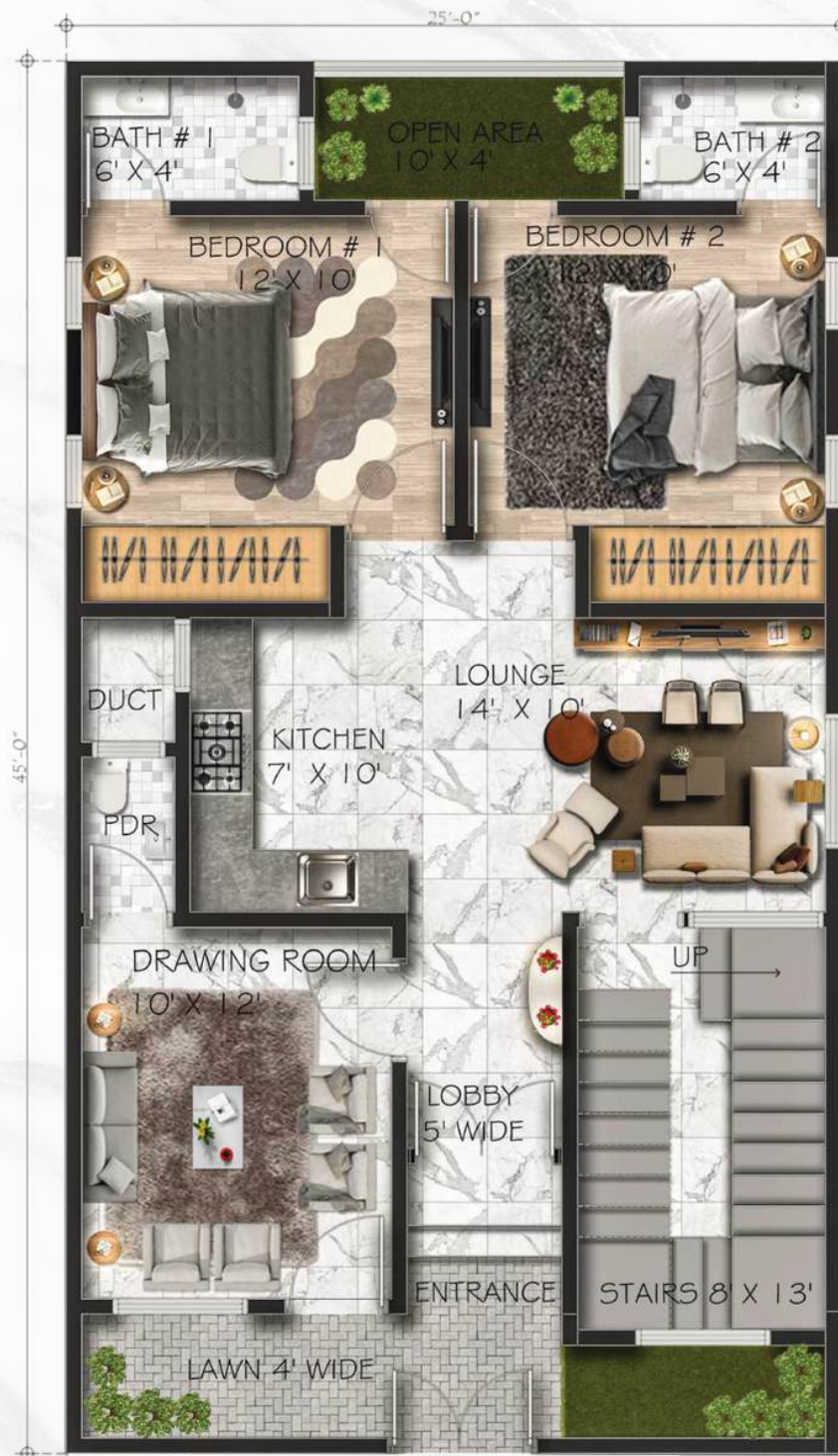


TYPE A

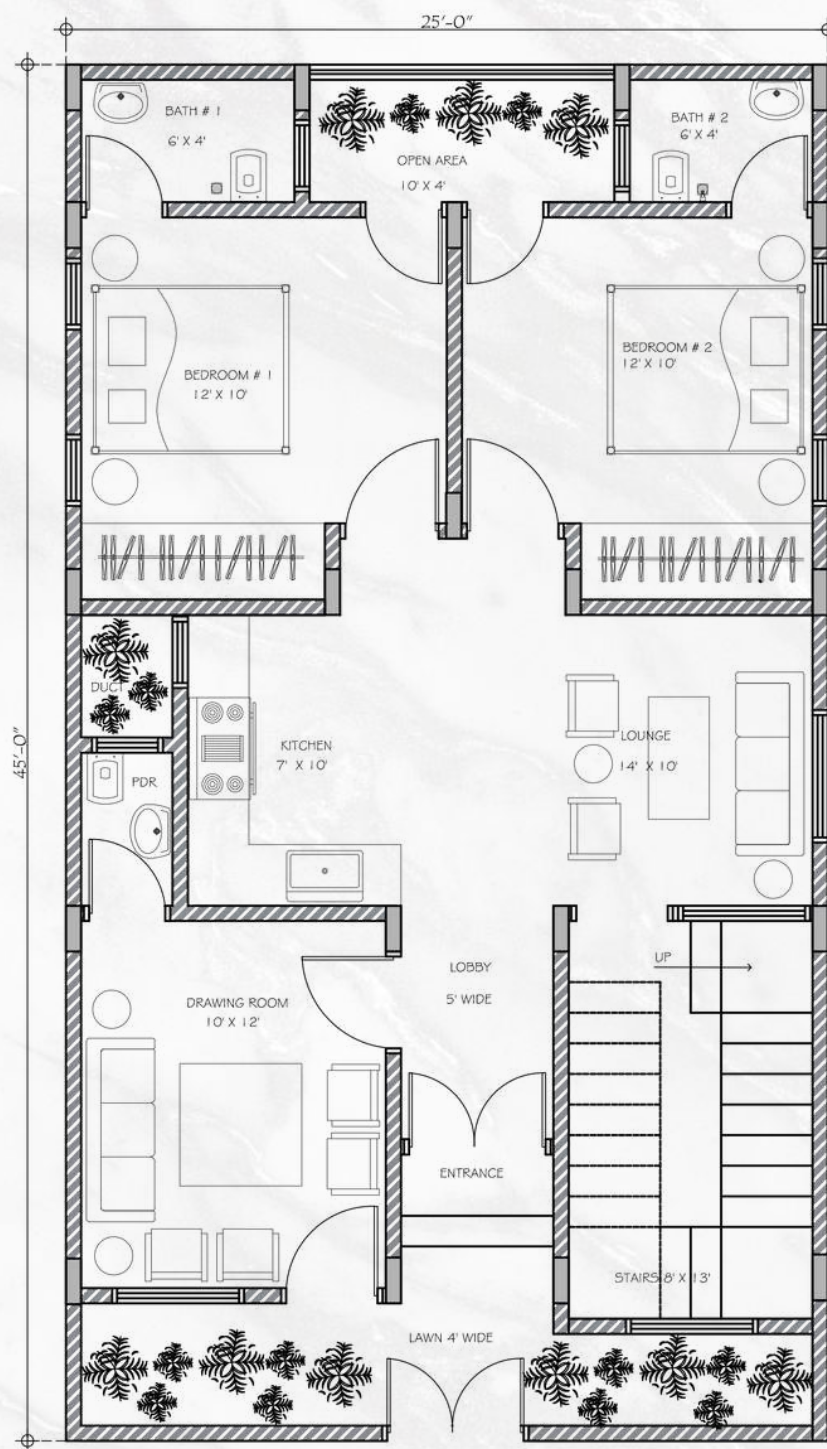
Design Details

This luxurious 5 Marla / 125 Sq.Yd. home design is impressive on its exterior with its modern design and beautiful landscaping. The lavish suite and magnificent bathroom are elegantly integrated into the decor. The design is finished with a rooftop terrace that offers a private retreat with panoramic views.





OPTION 01: GROUND FLOOR



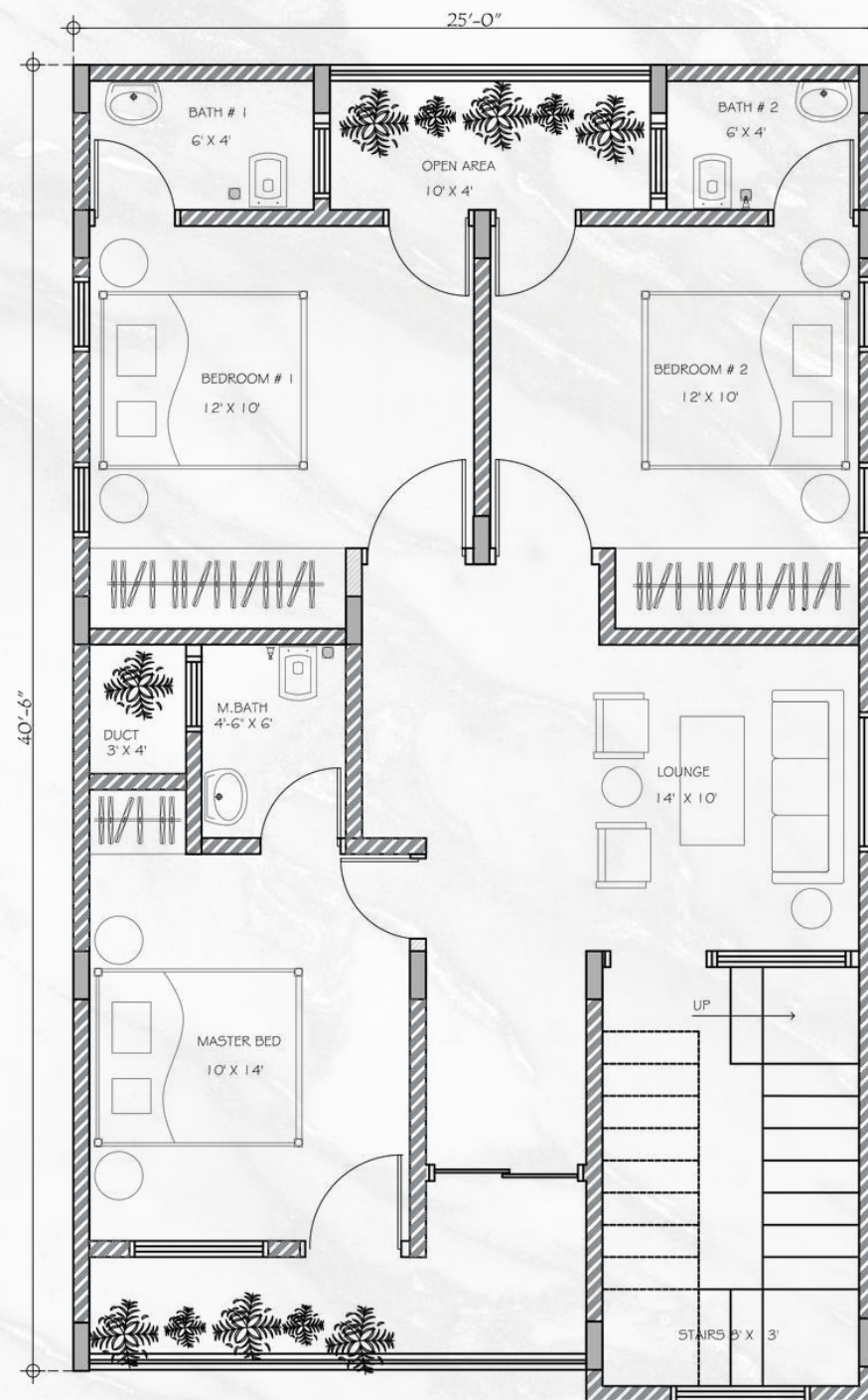
OPTION # 1 GROND FLOOR

5 MARLA / 125 SQ.YD. GROUND FLOOR

- 2 Bedrooms
- 1 Drawing Room
- 2 Bathrooms
- 1 Powder
- 1 Kitcen
- 1 Lounge
- 3 Open to Sky Spaces



OPTION 01: FIRST FLOOR



OPTION # 1 FIRST FLOOR

5 MARLA / 125 SQ.YD. FIRST FLOOR

- 3 Bedrooms
- 3 Bathrooms
- 1 Lounge
- 1 Terrace
- 2 Open to Sky Spaces





TYPE B

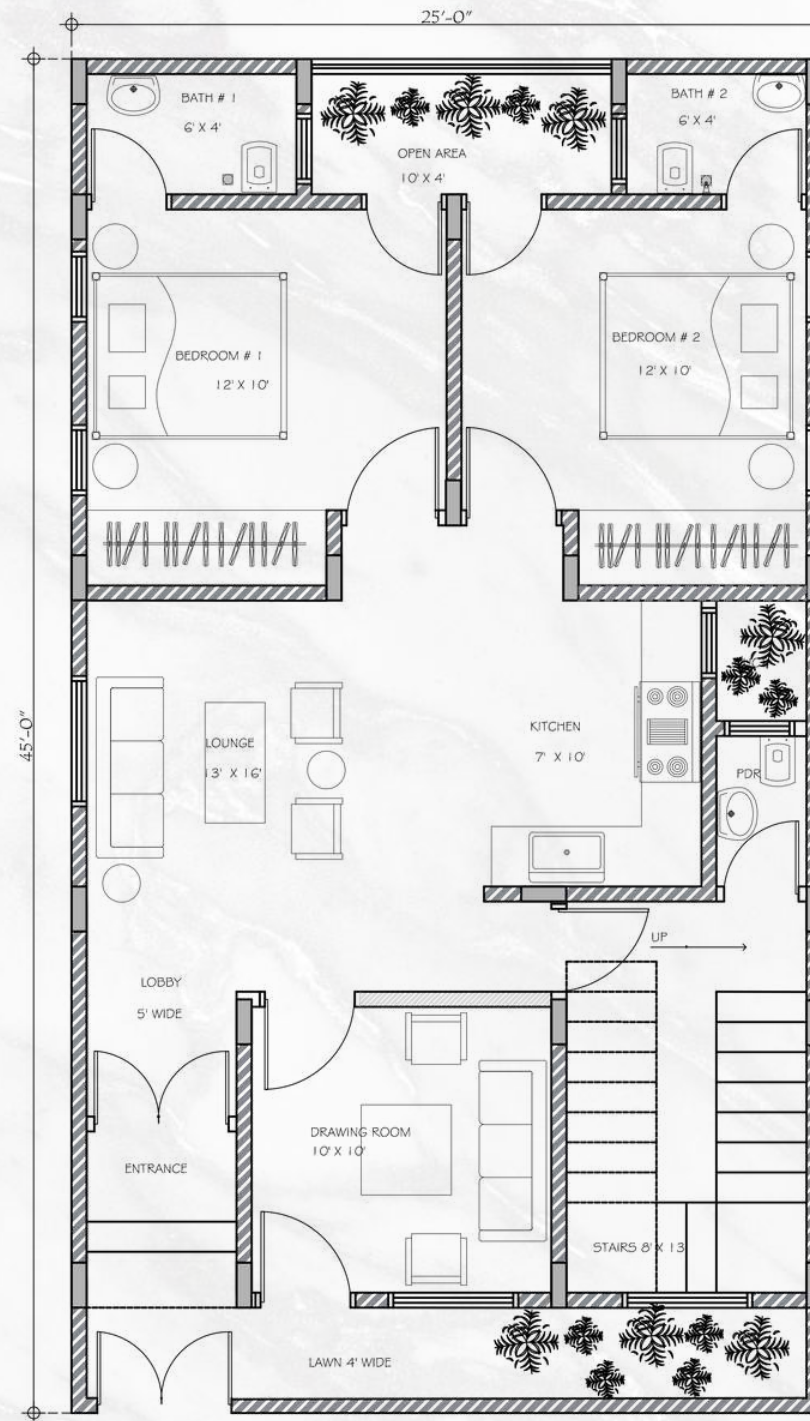
Design Details

This luxurious 5 Marla / 125 Sq.Yd. home design is impressive on its exterior with its modern design and beautiful landscaping. The lavish suite and magnificent bathroom are elegantly integrated into the decor. The design is finished with a rooftop terrace that offers a private retreat with panoramic views.





OPTION 02: GROUND FLOOR



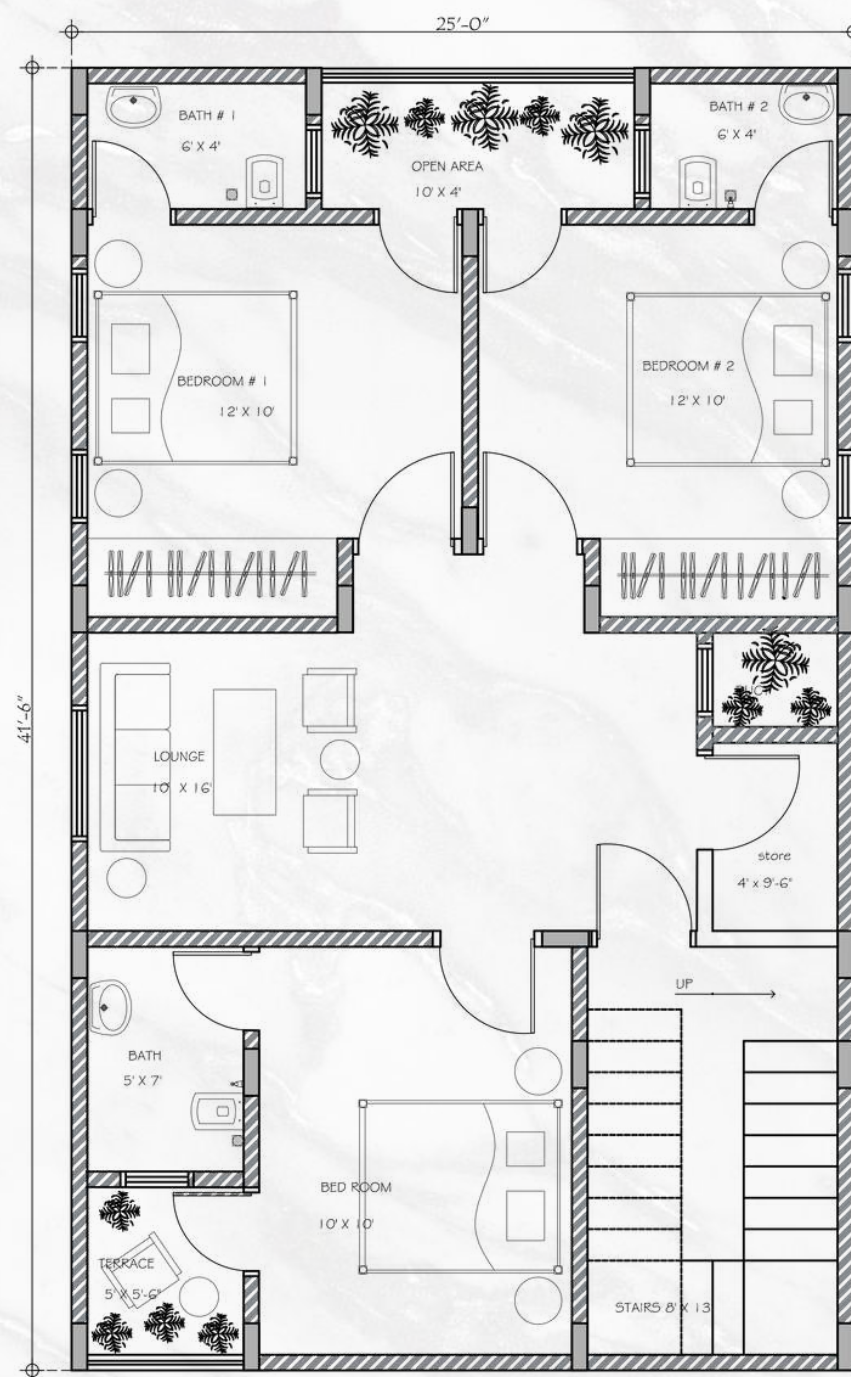
OPTION # 2 GROUND FLOOR

5 MARLA / 125 SQ.YD. GROUND FLOOR

- 2 Bedrooms
- 1 Drawing Room
- 2 Bathrooms
- 1 Powder
- 1 Kitchen
- 1 Lounge
- 3 Open to Sky Spaces



OPTION 02: FIRST FLOOR



OPTION # 2 FIRST FLOOR

5 MARLA / 125 SQ.YD. FIRST FLOOR

- 3 Bedrooms
- 3 Bathrooms
- 1 Lounge
- 1 Store
- 1 Terrace
- 2 Open to Sky Spaces





TYPE A

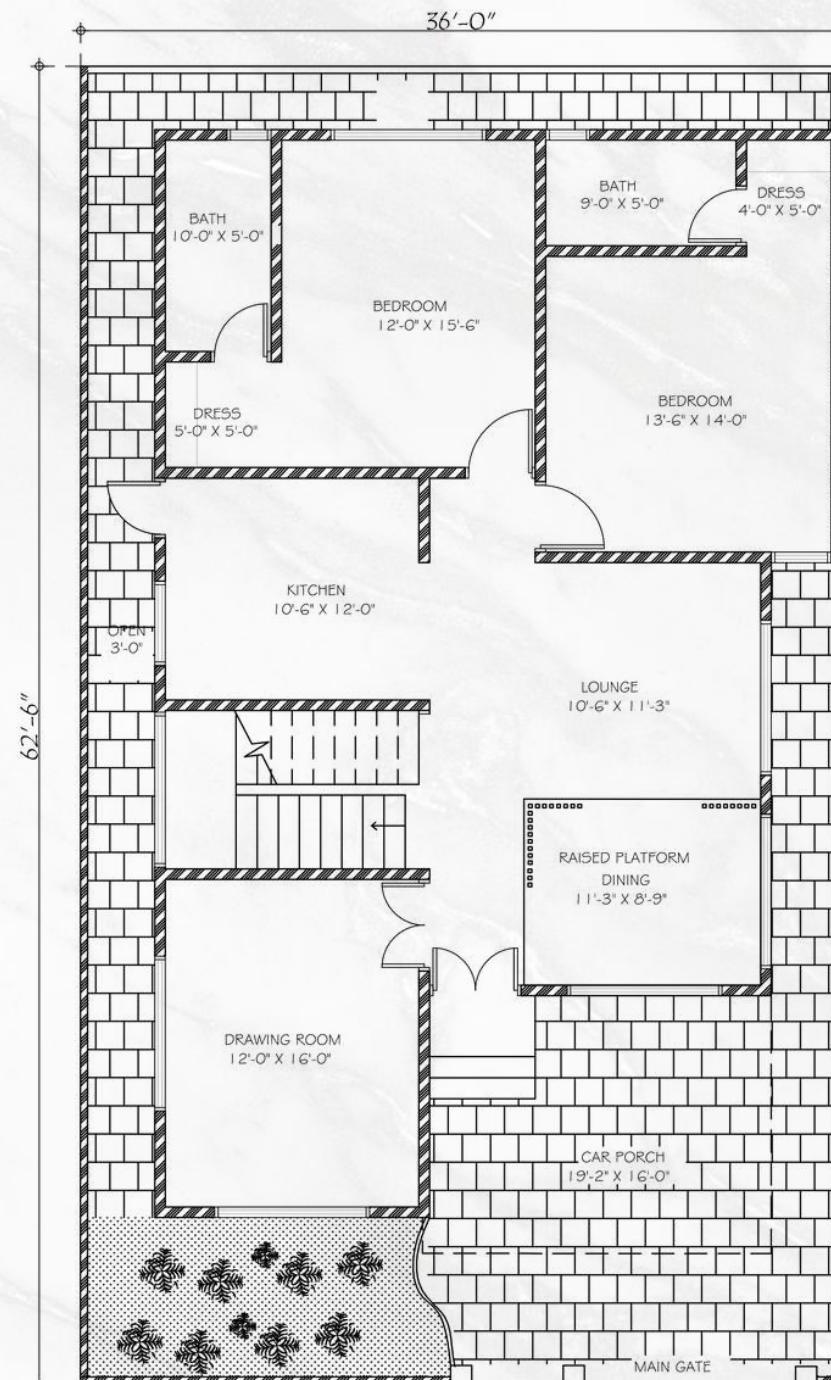
Design Details

An attractive living area is created by integrating interior and outdoor features of a luxury home design for a large 10 Marla / 250 Sq.Yd. property. This 10 Marla / 250 Sq.Yd. luxury home is an authentic art of comfort and design. It has a vast backyard with magnificent bedrooms, bathrooms, pool, outdoor kitchen, and lounge areas that complete the picture and provide an ideal protection for relaxation.





GROUND FLOOR
PLAN LAYOUT
AREA: 250 SQ.YD



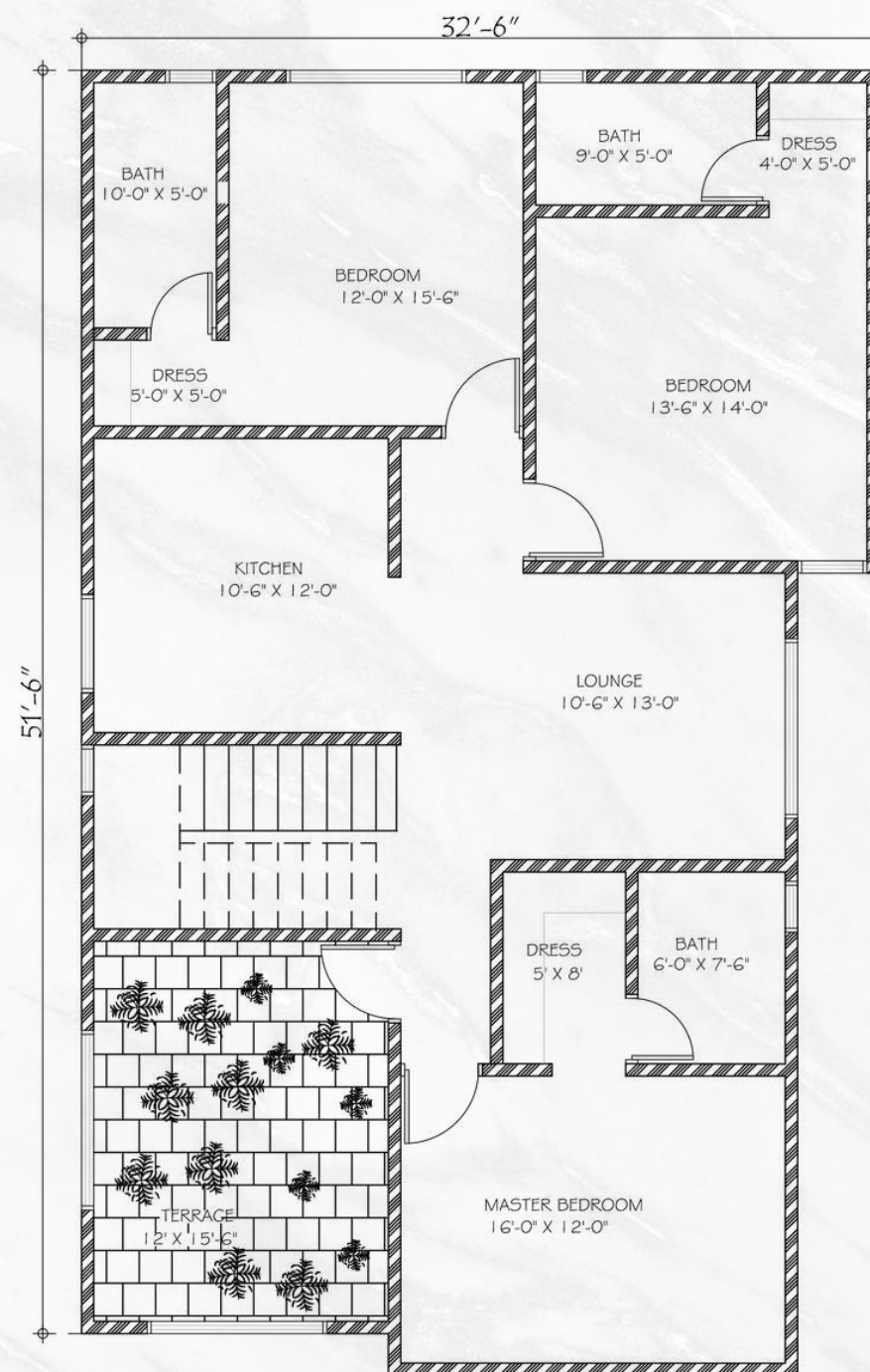
GROUND FLOOR
PLAN LAYOUT
AREA: 250 SQ.YD

10 MARLA / 250 SQ.YD. GROUND FLOOR

- 2 Bedrooms
- 2 Bathrooms
- 1 Drawing Room
- 1 Lounge
- 1 Kitchen
- 1 Dining
- 1 Car Porch



FIRST FLOOR PLAN
LAYOUT
AREA: 250 SQ.YD

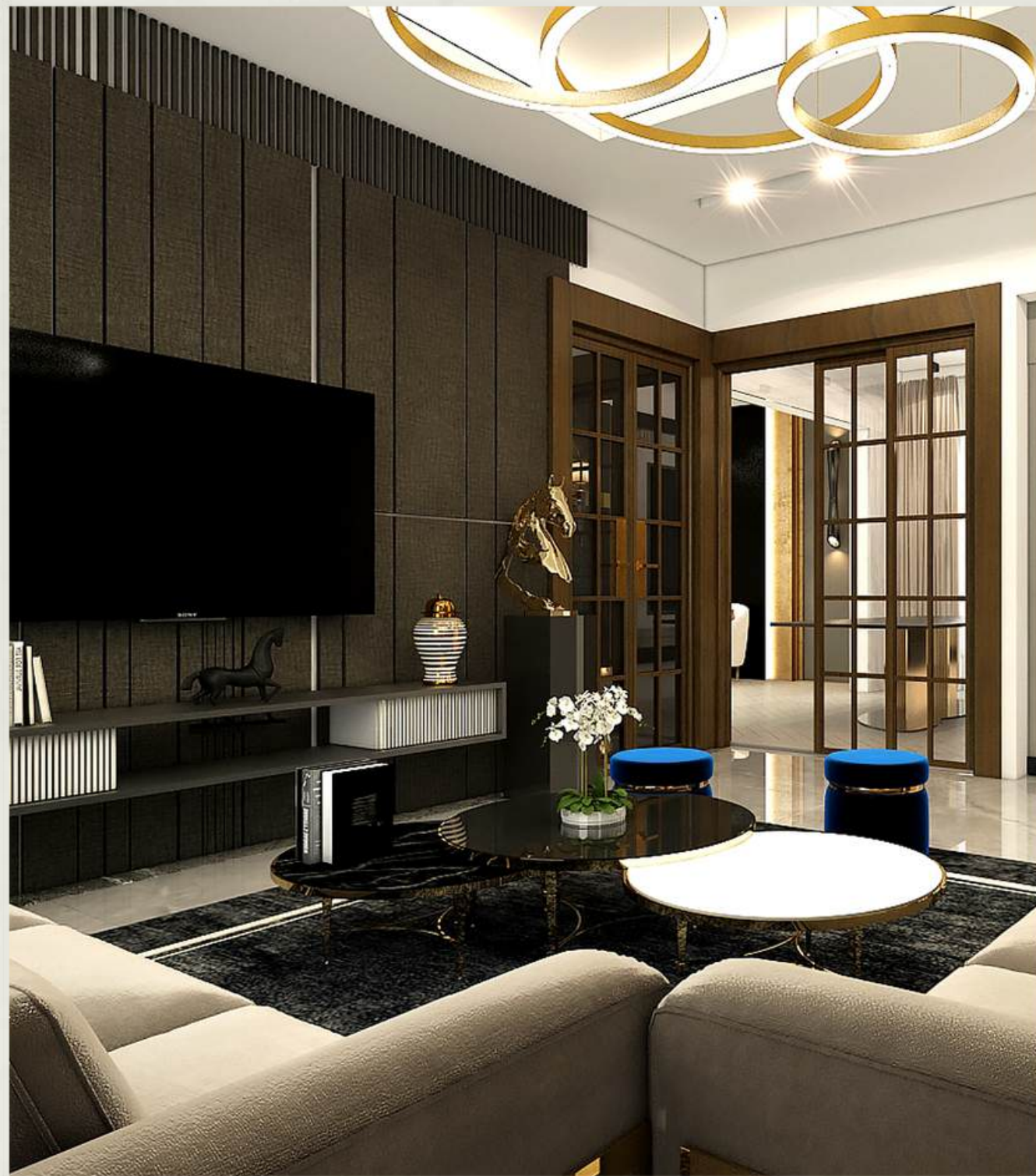


FIRST FLOOR PLAN LAYOUT
AREA: 250 SQ.YD

10 MARLA / 250 SQ.YD. FIRST FLOOR

- 3 Bedrooms
- 3 Bathrooms
- 1 Lounge
- 1 Kitchen
- 1 Terrace





TYPE B

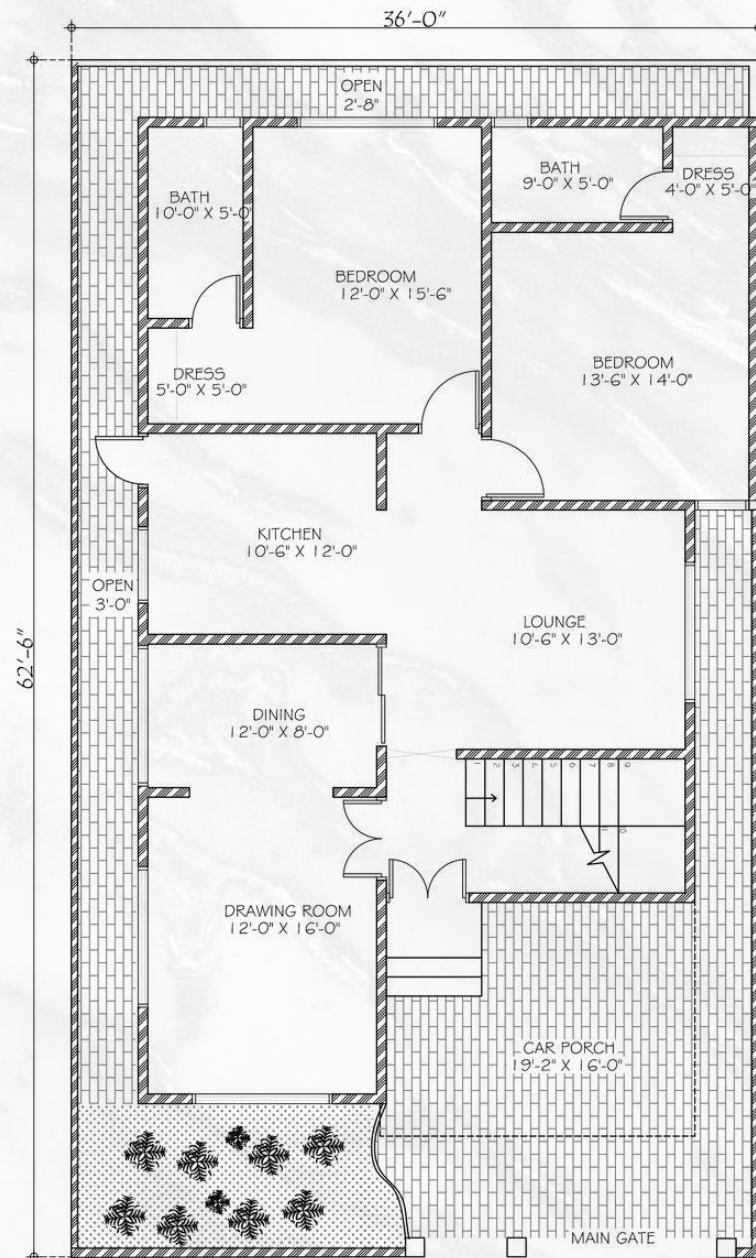
Design Details

An attractive living area is created by integrating interior and outdoor features of a luxury home design for a large 10 Marla / 250 Sq.Yd. property. This 10 Marla / 250 Sq.Yd. luxury home is an authentic art of comfort and design. It has a vast backyard with magnificent bedrooms, bathrooms, pool, outdoor kitchen, and lounge areas that complete the picture and provide an ideal protection for relaxation.





GROUND FLOOR
PLAN LAYOUT
AREA: 250 SQ.YD



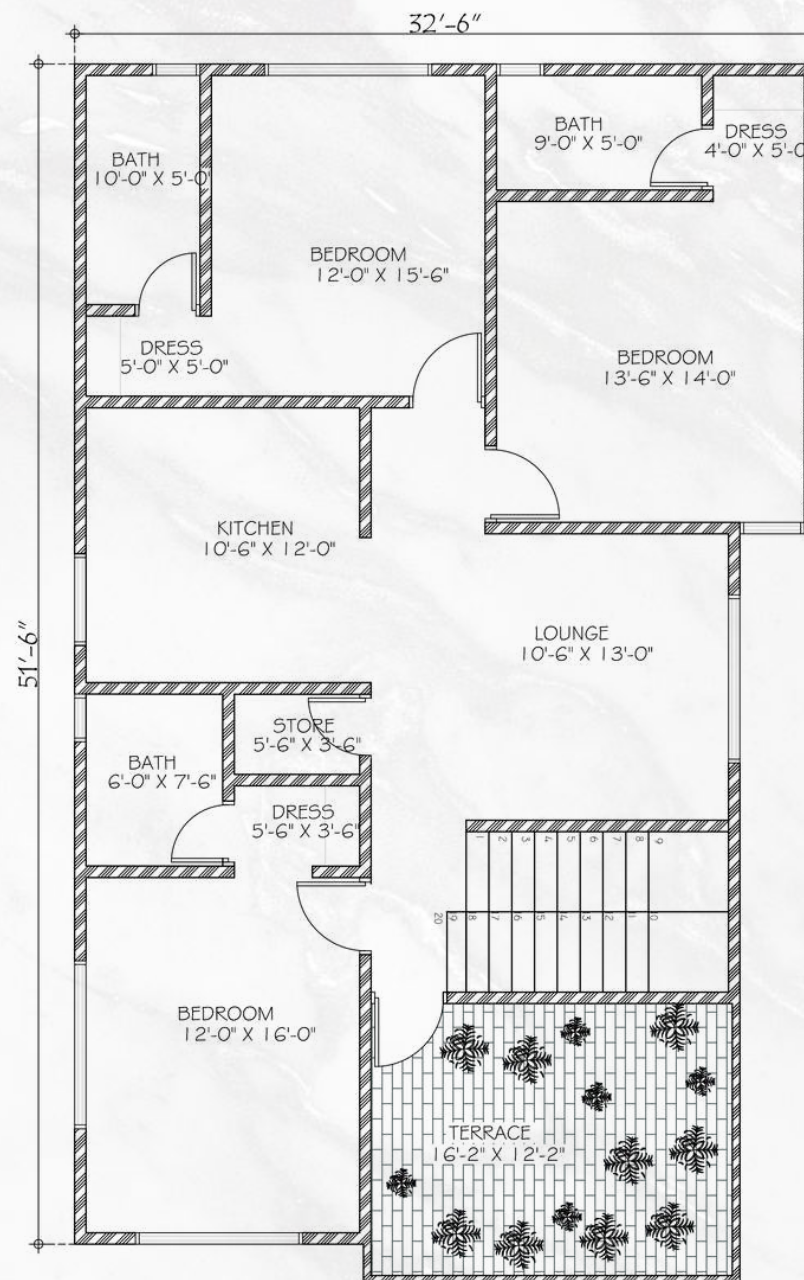
GROUND FLOOR
PLAN LAYOUT
AREA: 250 SQ.YD

10 MARLA / 250 SQ.YD. GROUND FLOOR

- 2 Bedrooms
- 2 Bathrooms
- 1 Drawing Room
- 1 Lounge
- 1 Kitchen
- 1 Dining
- 1 Car Porch



FIRST FLOOR PLAN
LAYOUT
AREA: 250 SQ.YD



FIRST FLOOR PLAN
LAYOUT
AREA: 250 SQ.YD

10 MARLA / 250 SQ.YD. FIRST FLOOR

- 3 Bedrooms
- 3 Bathrooms
- 1 Lounge
- 1 Kitchen
- 1 Store
- 1 Terrace





TYPE A

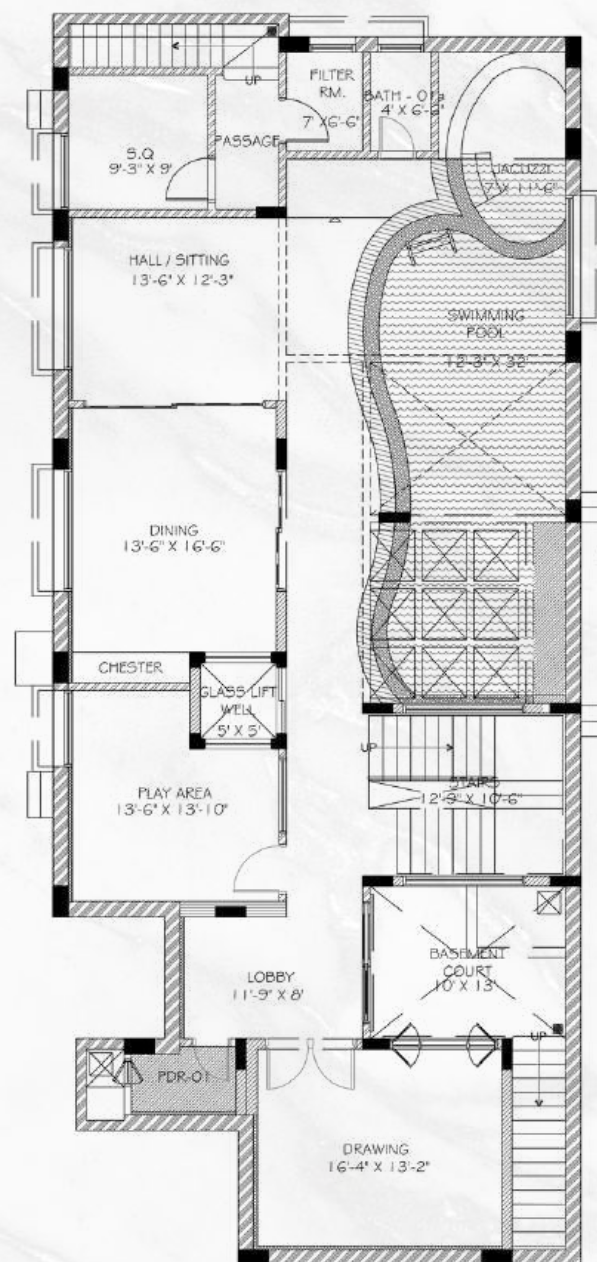
Design Details

An arrangement of luxury can be created across the interior and external spaces by designing a lavish home on a 1 Kanal / 500 Sq.Yd. surface. The outside magnificence displays architectural expertise, large lawns, and meticulously created landscapes. This 1 Kanal / 500 Sq.Yd. luxury home is the pinnacle of opulent living with its wide magnificent rooms decorated in the finest materials, custom furniture, and stunning private hideaways for relaxation and social gatherings.





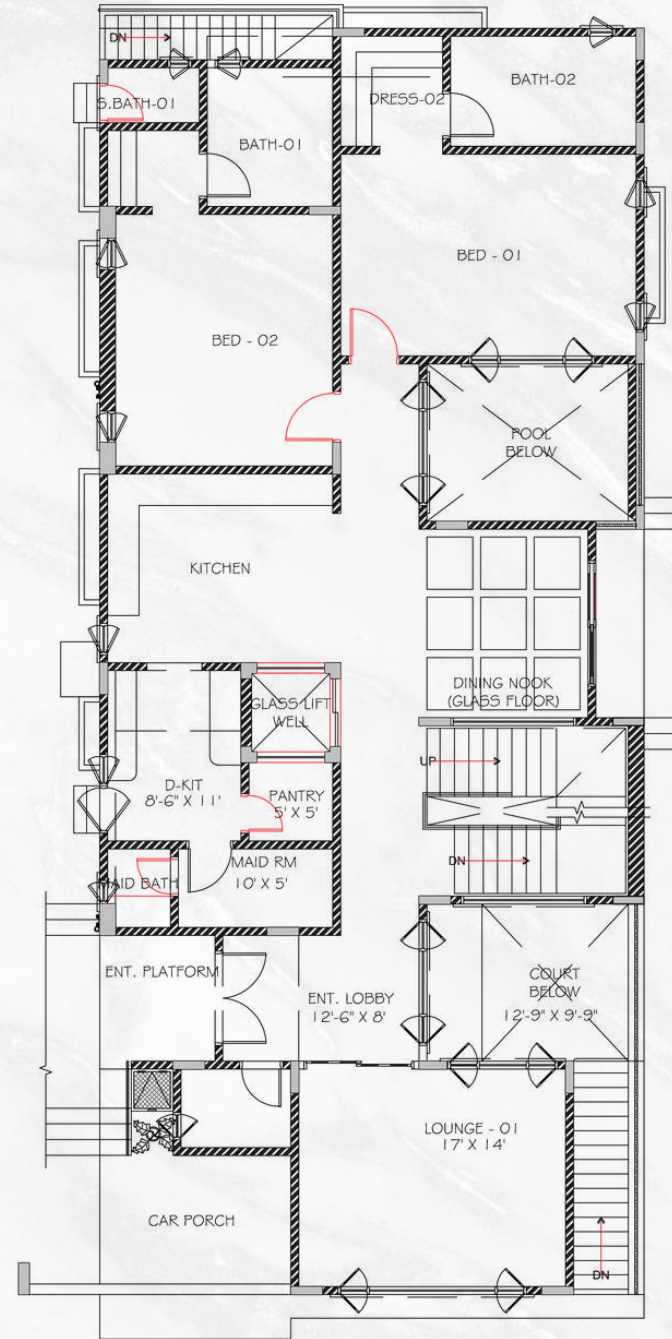
BASEMENT FLOOR
PLAN LAYOUT
AREA: 500 SQ.YD



1 KANAL / 500 SQ.YD BASEMENT FLOOR

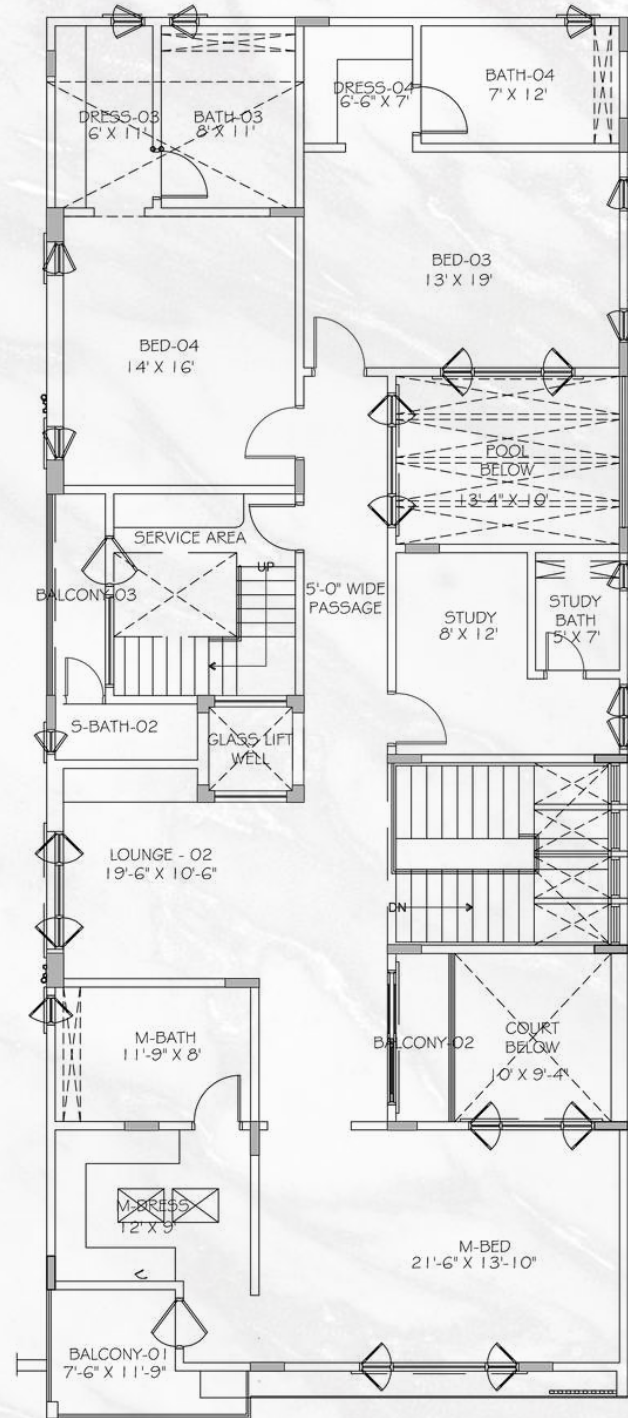
- 1 Swimming Pool + Jacuzzi
- 1 Lounge
- 1 Dining
- 1 Play Area
- 1 Drawing Room
- 1 Basement Court
- 1 Powder
- 1 Bath
- 1 Servant Quarter

GROUND FLOOR
PLAN LAYOUT
AREA: 500 SQ.YD



1 KANAL / 500 SQ.YD GROUND FLOOR

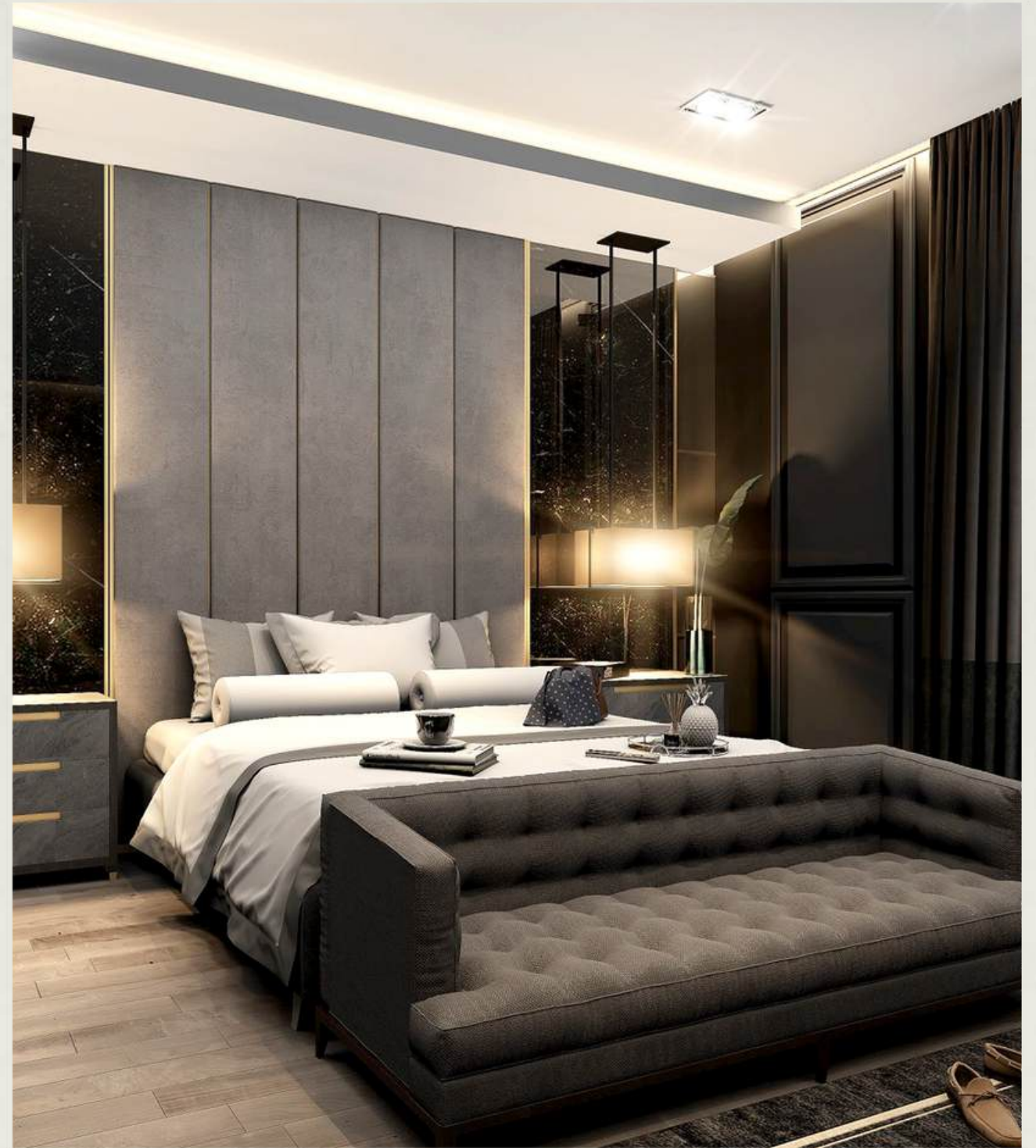
- 2 Bedrooms
- 2 Bathrooms
- 1 Maid Quarter
- 1 Servant Bath
- 1 Lounge
- 2 Kitchen
- 1 Dinning
- 1 Car Porch



1 KANAL / 500 SQ.YD FIRST FLOOR

- 3 Bedrooms
- 4 Bathrooms
- 1 Servant Bathroom
- 1 Lounge
- 3 Balconies
- 1 Study
- 1 Terrace
- 1 Elevator
- Open to Sky Spaces for Pool and Court

FIRST FLOOR
PLAN LAYOUT
AREA: 500 SQ.YD













TYPE B

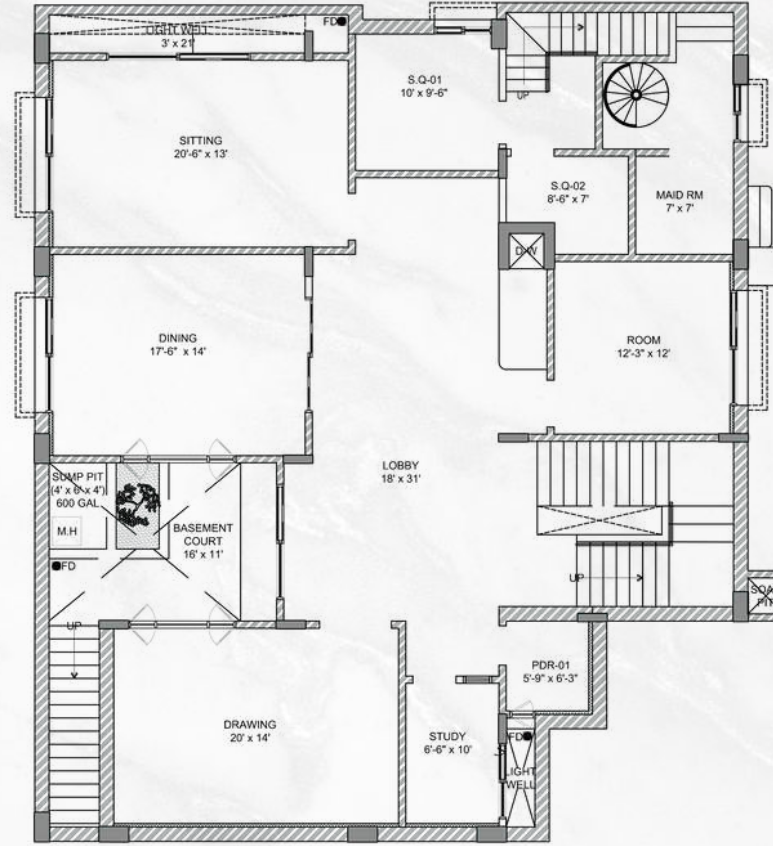
Design Details

An arrangement of luxury can be created across the interior and external spaces by designing a lavish home on a 1 Kanal / 500 Sq.Yd. surface. The outside magnificence displays architectural expertise, large lawns, and meticulously created landscapes. This 1 Kanal / 500 Sq.Yd. luxury home is the pinnacle of opulent living with its wide magnificent rooms decorated in the finest materials, custom furniture, and stunning private hideaways for relaxation and social gatherings.





BASEMENT FLOOR PLAN



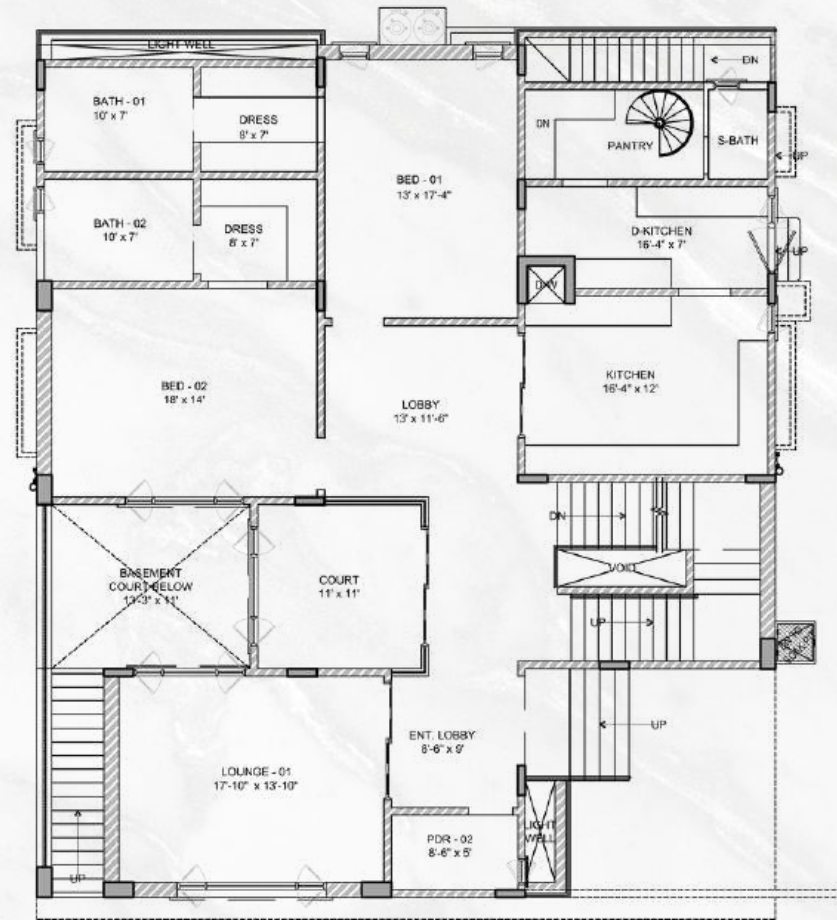
BASEMENT FLOOR PLAN

1 KANAL / 500 SQ.YD BASEMENT FLOOR

- 1 Bedroom
- 1 Lounge
- 1 Dinning
- 1 Study
- 1 Drawing Room
- 1 Basement Court
- 1 Powder
- 1 Maid Room
- 2 Servant Quarter



GROUND FLOOR PLAN



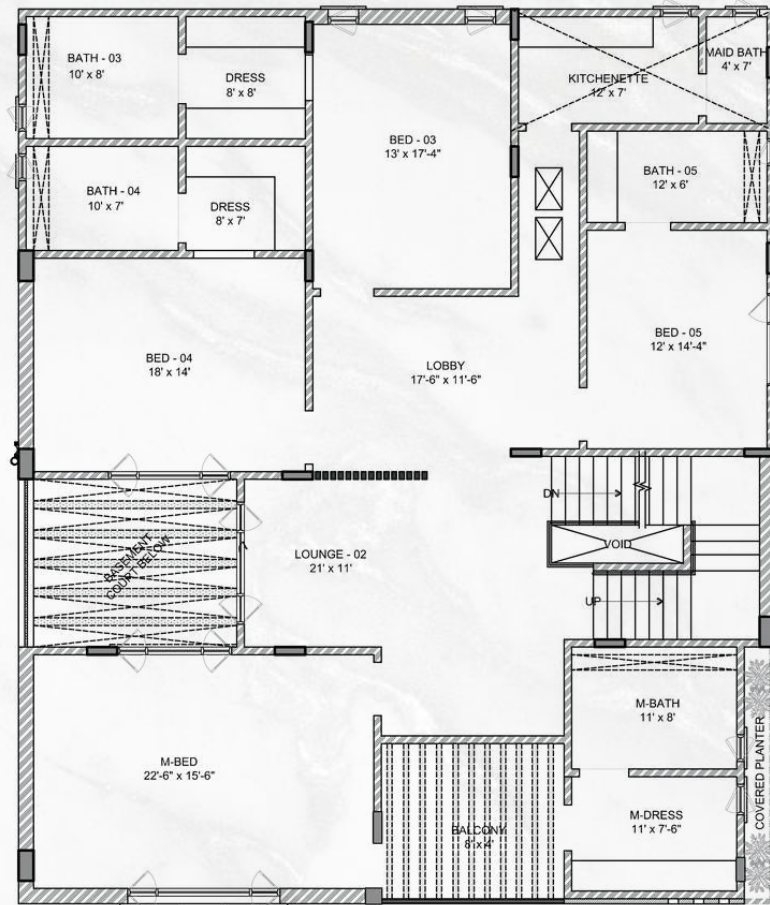
GROUND FLOOR PLAN

1 KANAL / 500 SQ.YD GROUND FLOOR

- 2 Bedrooms
- 2 Bathrooms
- 1 Powder
- 1 Servant Bath
- 1 Lounge
- 2 Kitchen
- 1 Court



FIRST FLOOR PLAN



FIRST FLOOR PLAN

1 KANAL / 500 SQ.YD FIRST FLOOR

- 4 Bedrooms
- 4 Bathrooms
- 1 Servant Bathroom
- 1 Lounge
- 3 Balconies
- 1 Kitchen
- 1 Balcony
- Open to Sky Space for Court











Luxury Lifestyle Developer

Signature Livings

Signature Livings brings Dubai's iconic lifestyle to District 2. You will invest in one of the best residential housing societies in Pakistan.



District 2

UAN: 92-51-111-911-999
Email: info@signaturelivings.pk

BOOKING OFFICE:

5th floor, Plot No. 5/17 Chinar Arcade, Road Rose Chenar Avenue,
Commercial 5, Mumtaz City, near New Islamabad International
Airport.

HEAD OFFICE:

Office No. 201, Al Attar Business Center Al Barsha, Sheikh Zayed
Road, Dubai, UAE.

☎ +971 4881 1932

Signature Livings

سینیشر لیفینگز للعقارات